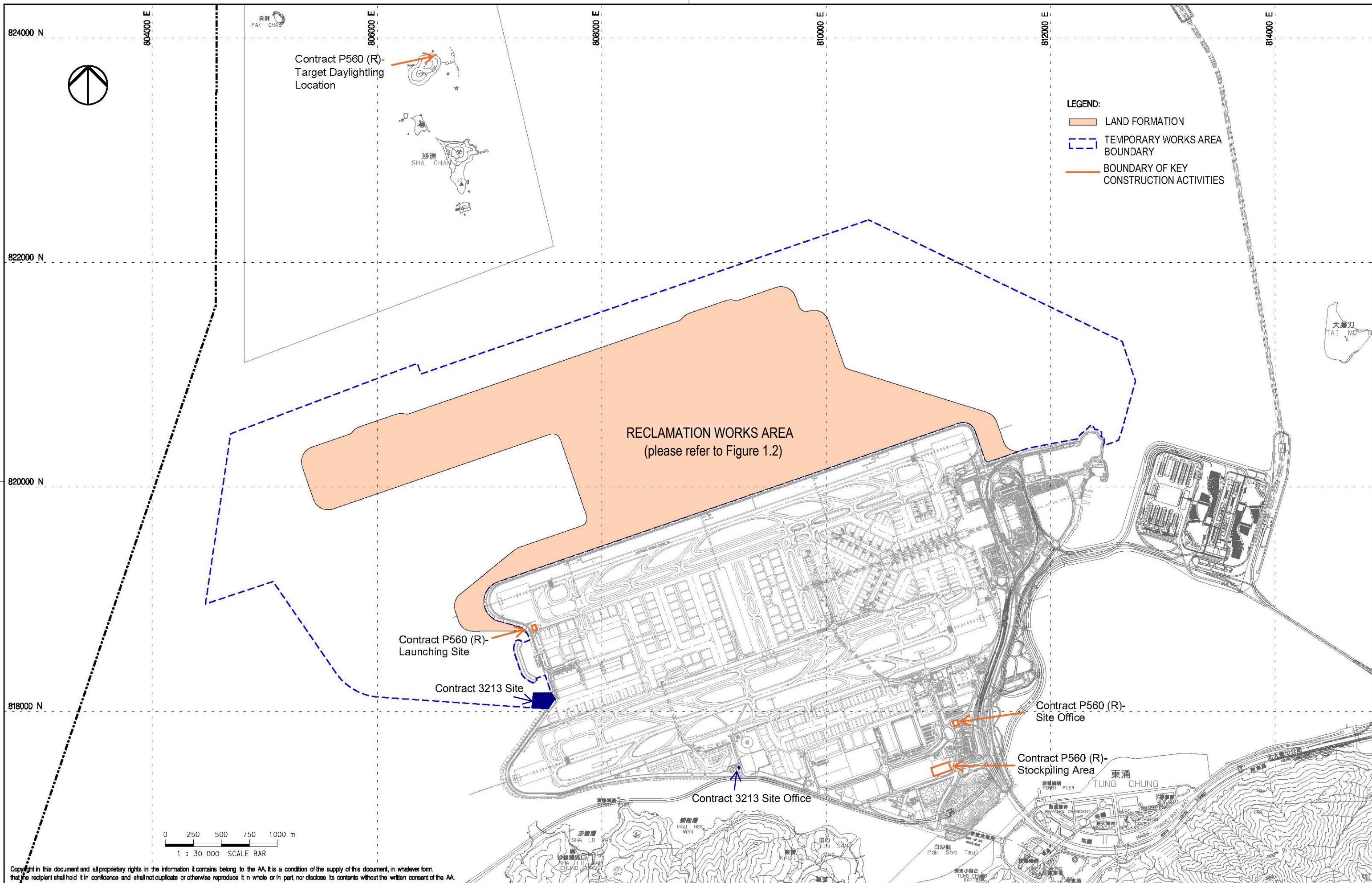


Figures



Copyright in this document and all proprietary rights in the information it contains belong to the AA. It is a condition of the supply of this document, in whatever form, that the recipient shall hold it in confidence and shall not duplicate or otherwise reproduce it in whole or in part, nor disclose its contents without the written consent of the AA.

Rev.	Date	Description	Checked
A	31AUG15	FIRST ISSUE	DC



LOCATIONS OF KEY CONSTRUCTION ACTIVITIES
IN THIS REPORTING PERIOD

Consultant's Signatures for Approval		Date
Design	DC	31AUG15
Checkers	DC	31AUG15
Design Supervisor	EC	31AUG15
Authorised Representative	JFP	31AUG15

EXPANSION OF HONG KONG INTERNATIONAL AIRPORT INTO A THREE-RUNWAY SYSTEM	
Drawing No.	FIGURE 1.1
Scale at A3	1 : 30000
Rev.	A

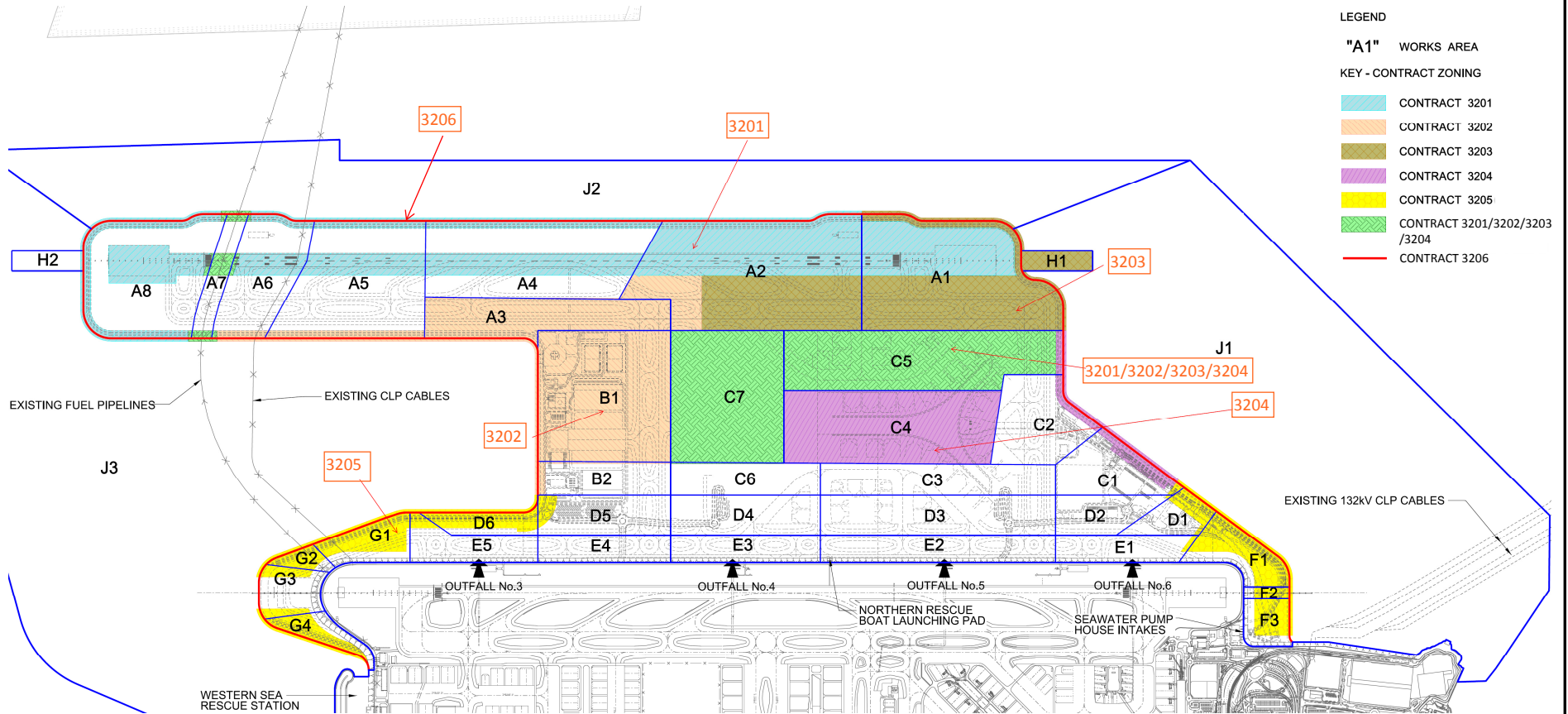


FIGURE 1.2- LOCATIONS OF RECLAMATION WORKS AREA



808000 E.

808000 E.

810000 E.

812000 E.

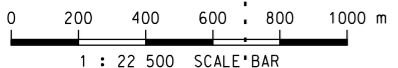
814000 E.

820000 N.

818000 N.

LEGEND:

- - - RECLAMATION AREA
- NOISE MONITORING STATION (UPDATED EM&A MANUAL)
- ▲ AIR QUALITY MONITORING STATION (UPDATED EM&A MANUAL)
- + CHEK LAP KOK WIND STATION



Copyright in this document and all proprietary rights in the information it contains belong to the AA. It is a condition of the supply of this document, in whatever form, that the recipient shall hold it in confidence and shall not duplicate or otherwise reproduce it in whole or in part, nor disclose its contents without the written consent of the AA.

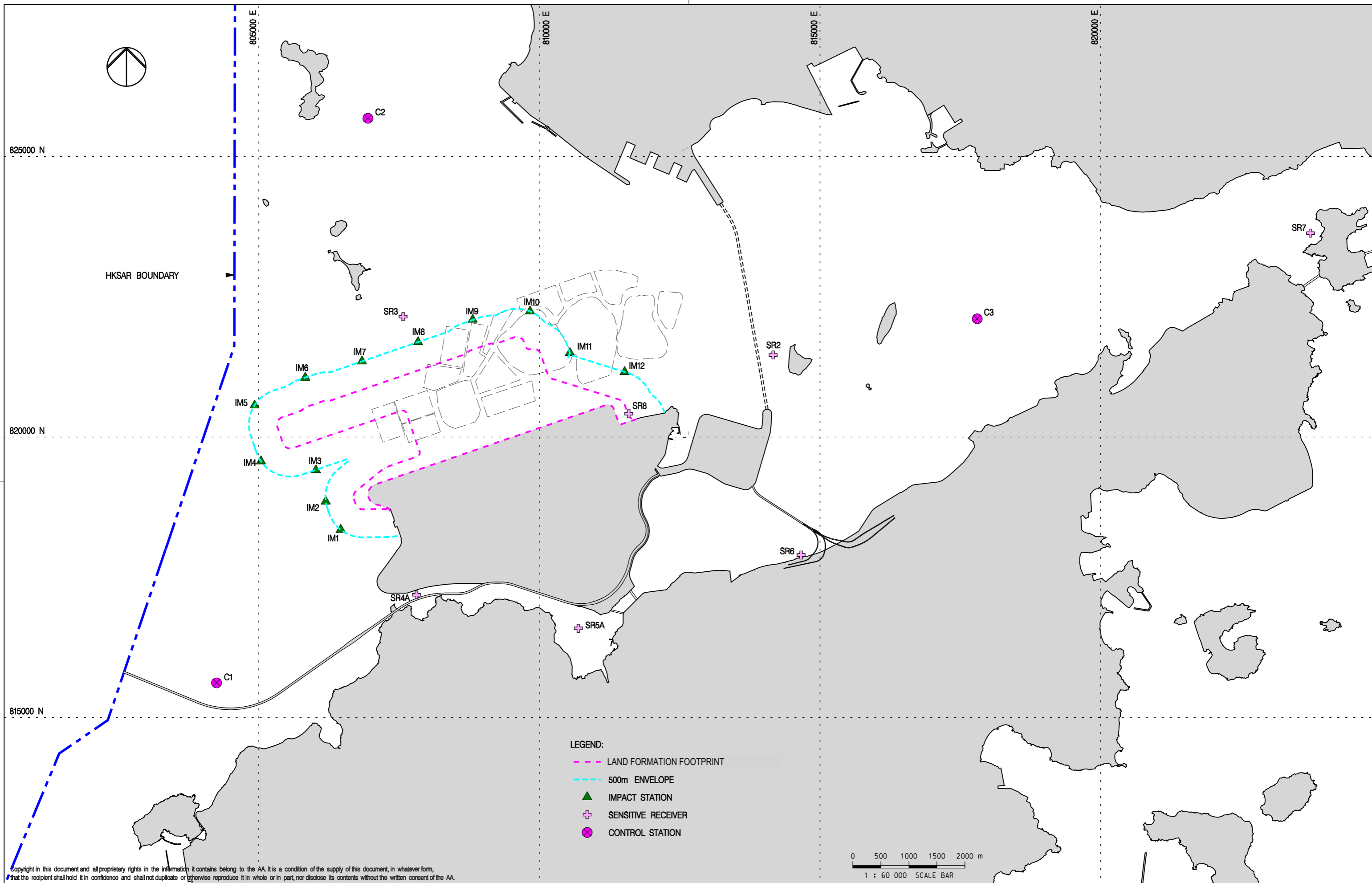
Rev.	Date	Description	Checked
A	06JAN16	FIRST ISSUE	RO
B	29JAN16	GENERAL REVISION	RO
C	11FEB16	GENERAL REVISION	RO



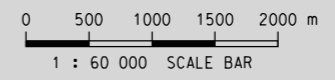
Title
LOCATIONS OF AIR AND NOISE MONITORING STATIONS AND CHEK LAP KOK WIND STATION

Consultant's Signatures for Approval		Date
Design	AM	11FEB16
Checkers	AM / TK	11FEB16
Approver	EC	11FEB16

EXPANSION OF HONG KONG INTERNATIONAL AIRPORT INTO A THREE-RUNWAY SYSTEM	
Drawing No.	Scale at A3 1 : 22500
FIGURE 2.1	Rev. C



- LEGEND:
- LAND FORMATION FOOTPRINT
 - 500m ENVELOPE
 - ▲ IMPACT STATION
 - ⊕ SENSITIVE RECEIVER
 - ⊗ CONTROL STATION



Copyright in this document and all proprietary rights in the information it contains belong to the AA. It is a condition of the supply of this document, in whatever form, that the recipient shall hold it in confidence and shall not duplicate or otherwise reproduce it in whole or in part, nor disclose its contents without the written consent of the AA.

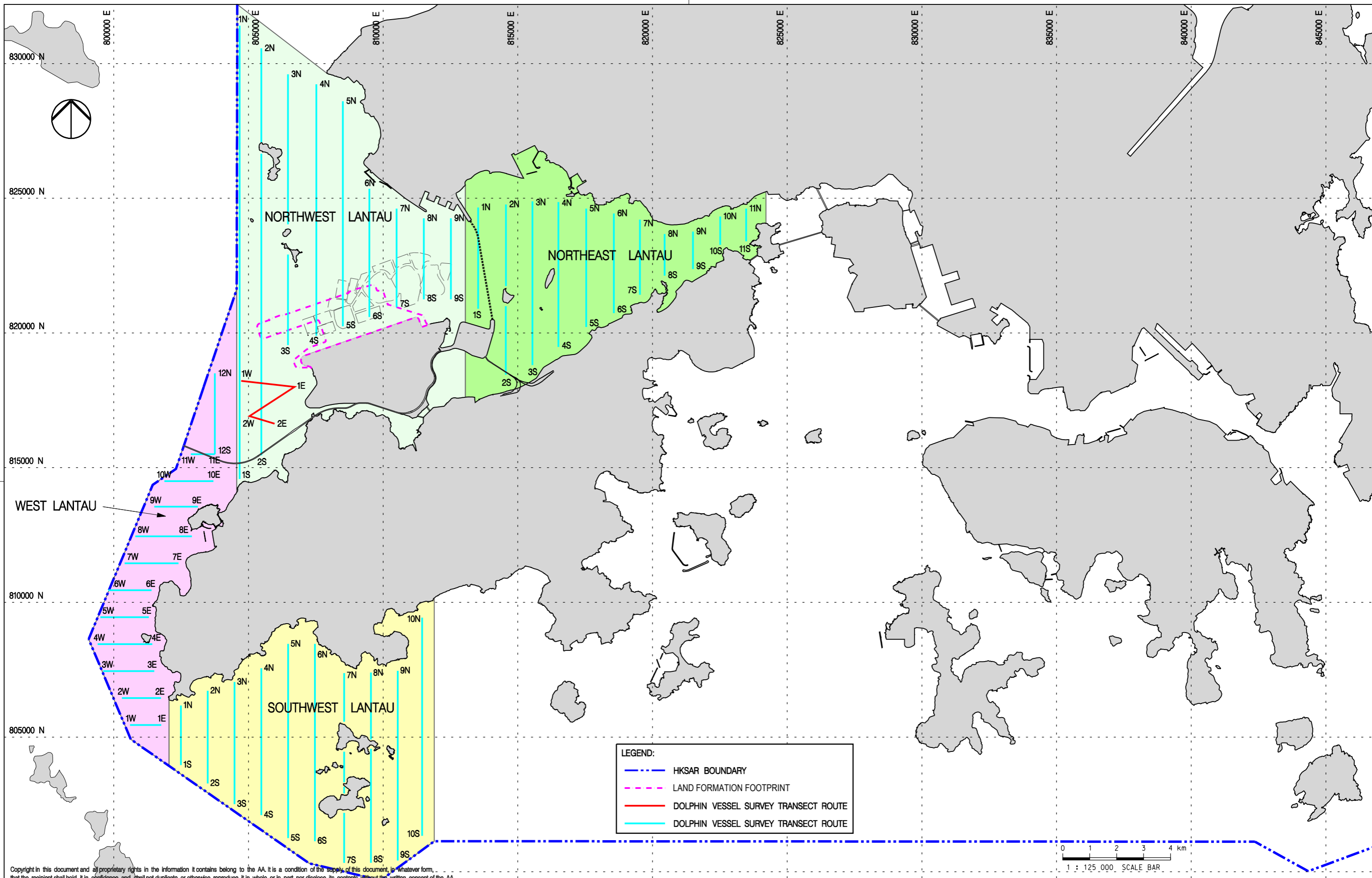
Rev.	Date	Description	Checked
A	02DEC15	FIRST ISSUE	DC
B	04MAY16	GENERAL REVISION	RO
C	06JUN16	GENERAL REVISION	LC



Title
WATER QUALITY MONITORING STATIONS

Consultant's Signatures for Approval		Date
Design	DC	06JUN16
Checkers	DC / TK	06JUN16
Approver	EC	06JUN16

EXPANSION OF HONG KONG INTERNATIONAL AIRPORT INTO A THREE-RUNWAY SYSTEM		Scale at A3
Drawing No.	FIGURE 3.1	1 : 60000
Rev.	C	



LEGEND:

- - - HKSAR BOUNDARY
- - - LAND FORMATION FOOTPRINT
- DOLPHIN VESSEL SURVEY TRANSECT ROUTE
- DOLPHIN VESSEL SURVEY TRANSECT ROUTE

Copyright in this document and all proprietary rights in the information it contains belong to the AA. It is a condition of the supply of this document, in whatever form, that the recipient shall hold it in confidence and shall not duplicate or otherwise reproduce it in whole or in part, nor disclose its contents without the written consent of the AA.

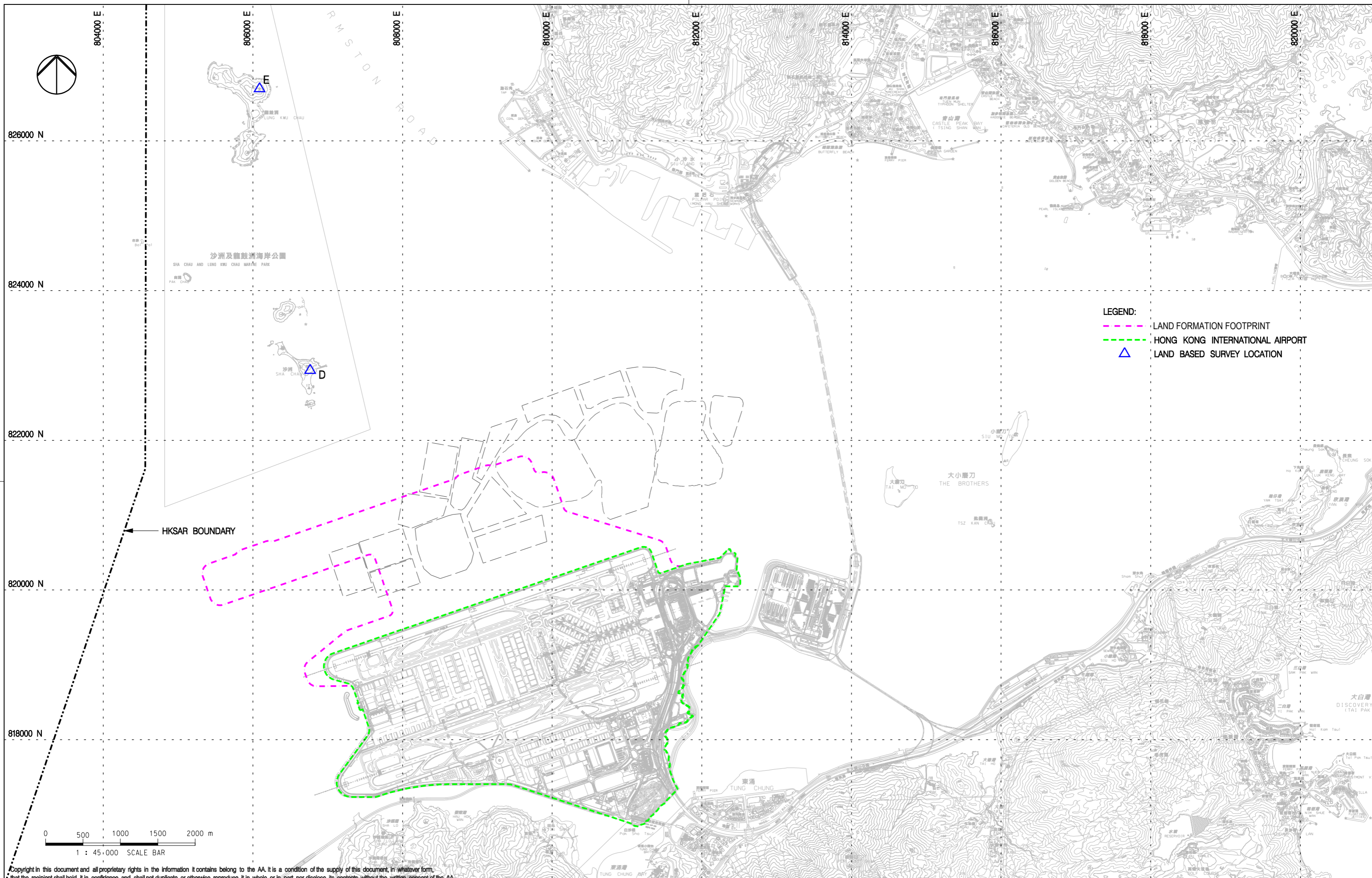
Rev.	Date	Description	Checked
A	02DEC15	FIRST ISSUE	JC



Title
VESSEL BASED DOLPHIN MONITORING TRANSECTS IN BASELINE MONITORING

Consultant's Signatures for Approval		Date
Design	JC	02DEC15
Checkers	JC / TK	02DEC15
Approver	EC	02DEC15

EXPANSION OF HONG KONG INTERNATIONAL AIRPORT INTO A THREE-RUNWAY SYSTEM	
Drawing No.	Scale at A3 1 : 125000
FIGURE 6.1	Rev. A



LEGEND:
 - - - LAND FORMATION FOOTPRINT
 - - - HONG KONG INTERNATIONAL AIRPORT
 ▲ LAND BASED SURVEY LOCATION

Copyright in this document and all proprietary rights in the information it contains belong to the AA. It is a condition of the supply of this document, in whatever form, that the recipient shall hold it in confidence and shall not duplicate or otherwise reproduce it in whole or in part, nor disclose its contents without the written consent of the AA.

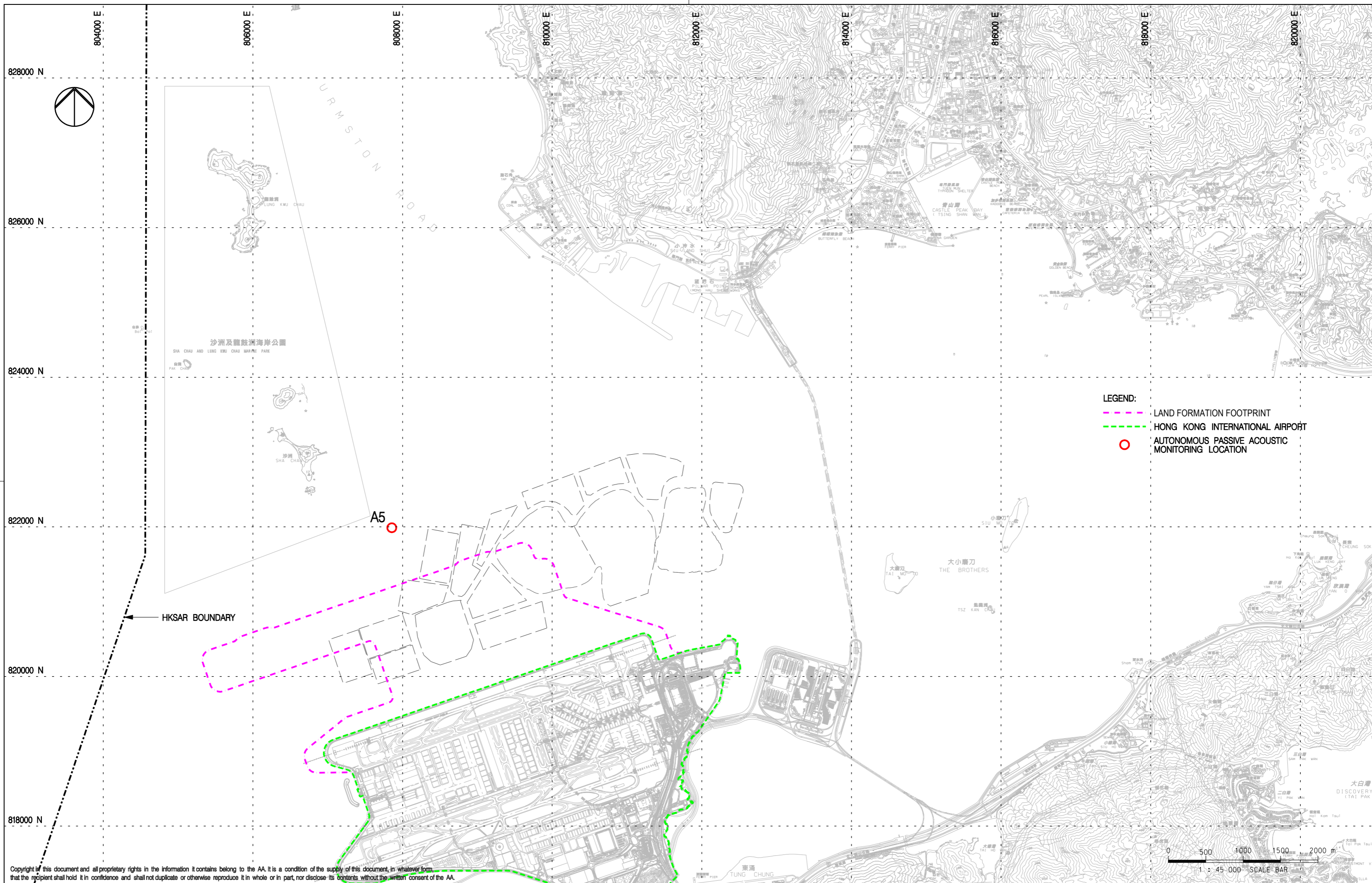
Rev.	Date	Description	Checked
A	02DEC15	FIRST ISSUE	JC



Title
**LAND BASED DOLPHIN MONITORING
 IN BASELINE AND CONSTRUCTION PHASES**

Consultant's Signatures for Approval		Date
Design	JC	02DEC15
Checkers	JC / TK	02DEC15
Approver	EC	02DEC15

EXPANSION OF HONG KONG INTERNATIONAL AIRPORT INTO A THREE-RUNWAY SYSTEM
 Drawing No. **FIGURE 6.2**
 Scale at A3
1 : 45000
 Rev. **A**



- LEGEND:**
- LAND FORMATION FOOTPRINT
 - HONG KONG INTERNATIONAL AIRPORT
 - AUTONOMOUS PASSIVE ACOUSTIC MONITORING LOCATION

Copyright in this document and all proprietary rights in the information it contains belong to the AA. It is a condition of the supply of this document, in whatever form, that the recipient shall hold it in confidence and shall not duplicate or otherwise reproduce it in whole or in part, nor disclose its contents without the written consent of the AA.

Rev.	Date	Description	Checked
A	02DEC15	FIRST ISSUE	JC



Title
LOCATIONS FOR AUTONOMOUS PASSIVE ACOUSTIC MONITORING IN BASELINE AND CONSTRUCTION PHASES

Consultant's Signatures for Approval		Date
Design	JC	02DEC15
Checkers	JC / TK	02DEC15
Approver	EC	02DEC15

EXPANSION OF HONG KONG INTERNATIONAL AIRPORT INTO A THREE-RUNWAY SYSTEM	
Drawing No.	FIGURE 6.5
Scale at A3	1 : 45000
Rev.	A